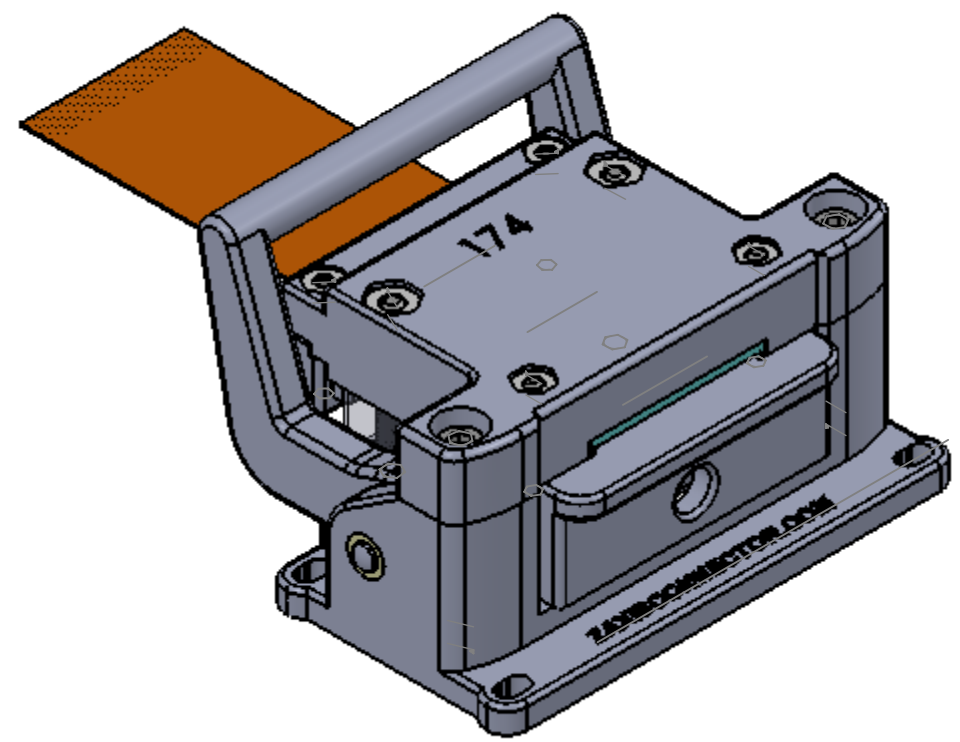


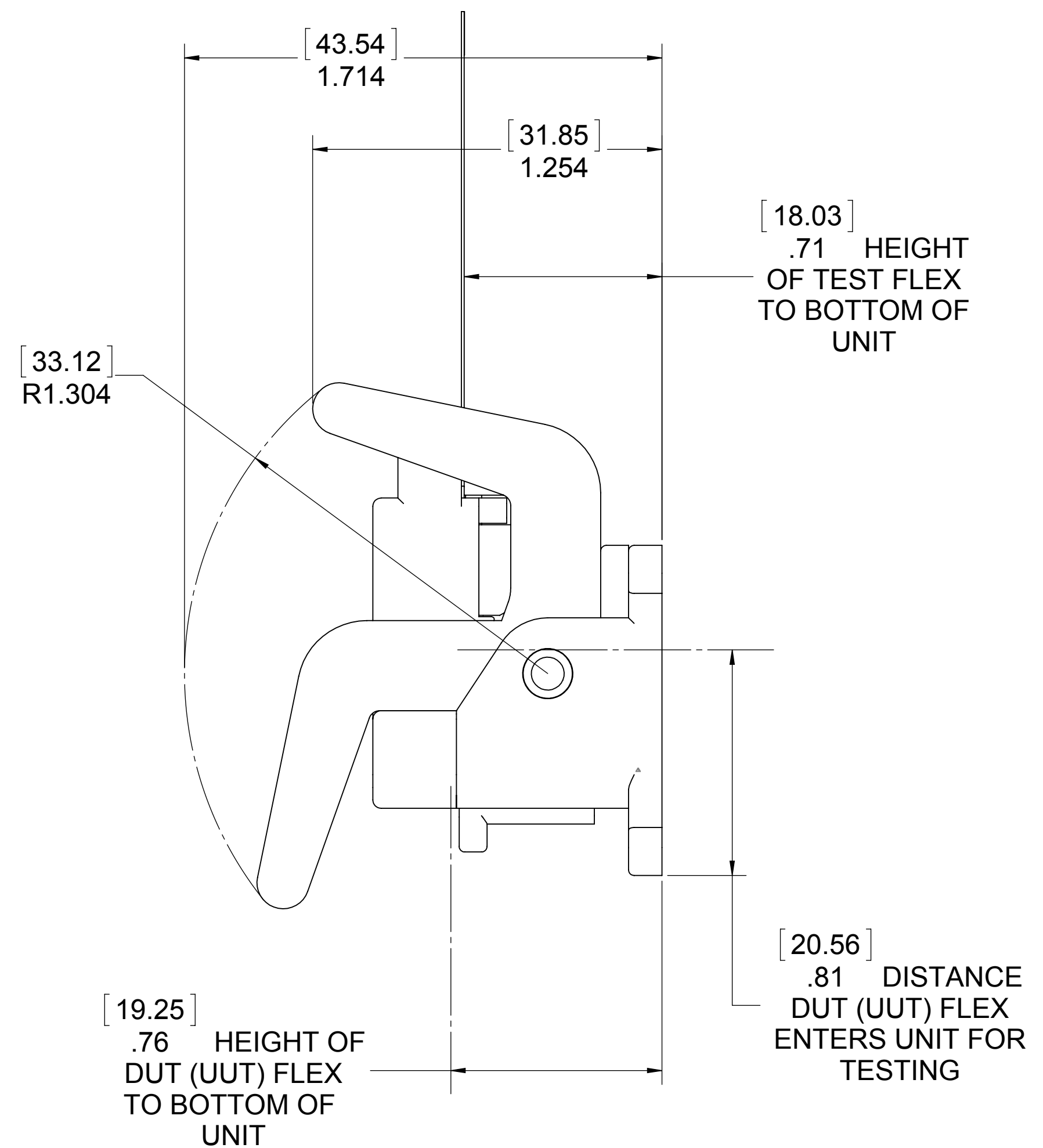
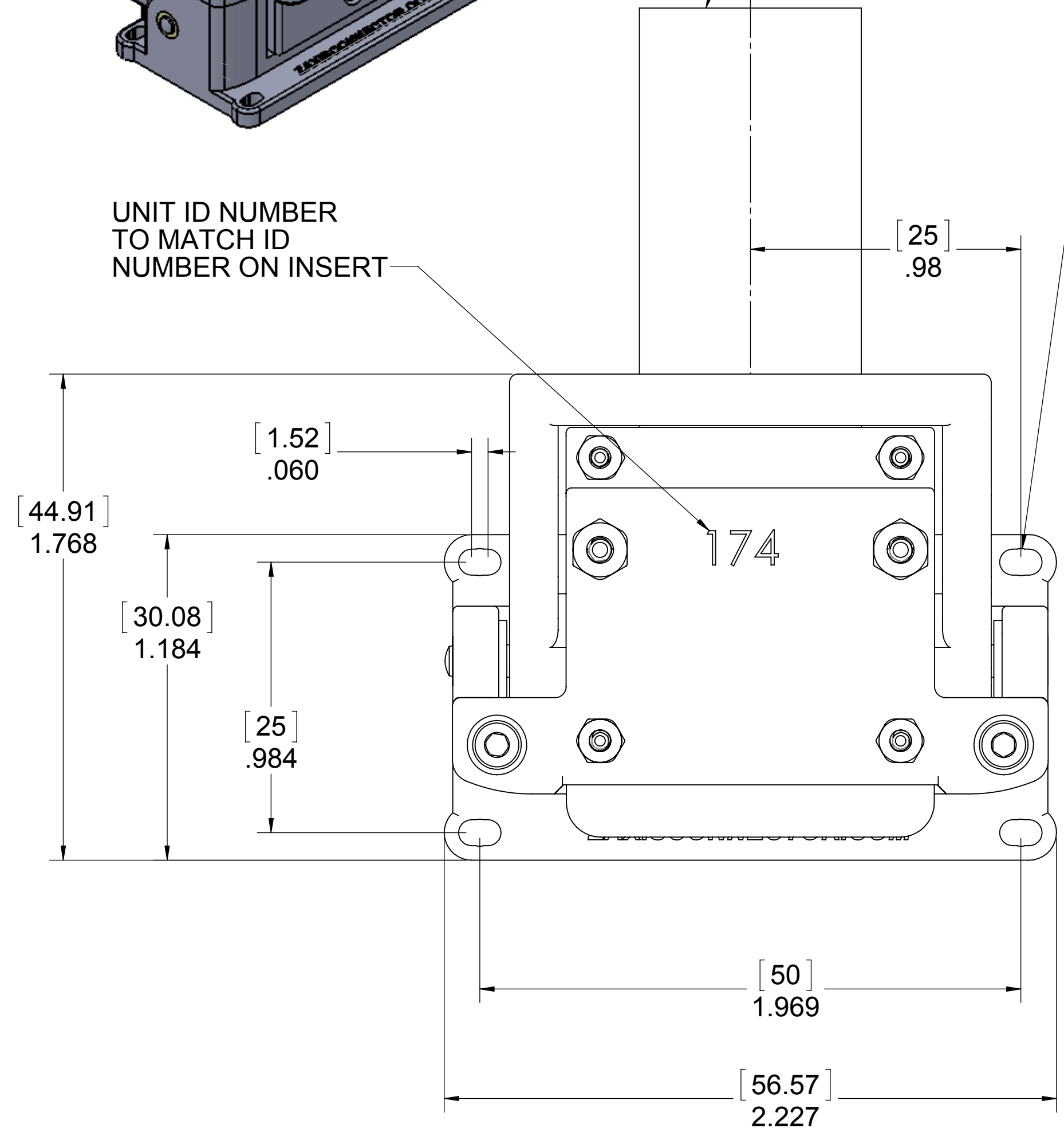
REVISIONS				
ZONE	REV.	DESCRIPTION	DATE	APPROVED



MAXIMUM FLEX WIDTH IS .5mm X 40 TRACES  
 TEST EQUIPMENT FLEX LENGTH DEPENDS  
 ON AVAILABILITY. IN THIS VIEW TRACES  
 DON'T SHOW SINCE THEY ARE ON THE  
 UNDERSIDE

4X CLEARANCE FOR  
 M2 OR 2-56 SCREW

UNIT ID NUMBER  
 TO MATCH ID  
 NUMBER ON INSERT



NOTE:  
 FOR THIS UNIT, TRACES ON DUT (UUT) FLEX MUST BE FACING DOWN, TRACES  
 ON FLEX GOING TO TEST EQUIPMENT ARE ALSO DOWN, BUT CAN FACE UP IF A  
 FLIPOVER FLEX IS USED.

www.zaxisconnector.com

VIEWS ARE GENERATED BY THIRD ANGLE PROJECTION 	UNLESS OTHERWISE SPECIFIED: DIMENSIONS ARE IN INCHES TOLERANCES: FRACTIONAL ± 1/32 ANGULAR: MACH ± 1/2° BEND ± TWO PLACE DECIMAL ± 0.10 THREE PLACE DECIMAL ± 0.005 FOUR PLACE DECIMAL ± 0.0002	NAME	DATE	<b>Z-AXIS CONNECTOR CO.</b> TITLE: Envelope Mini Down Medium SIZE DWG. NO. REV <b>C MDM-2D-F-A</b> SCALE: 1:1 WEIGHT: SHEET 1 OF 1	
	INTERPRET GEOMETRIC TOLERANCING PER: MATERIAL	DRAWN	RCK		3/18/15
	FINISH	CHECKED	ENG APPR.		MFG APPR.
	APPLICATION	DO NOT SCALE DRAWING	Q.A.		COMMENTS:
PROPRIETARY AND CONFIDENTIAL THE INFORMATION CONTAINED IN THIS DRAWING IS THE SOLE PROPERTY OF Z-AXIS CONNECTOR CO. ANY REPRODUCTION IN PART OR AS A WHOLE WITHOUT THE WRITTEN PERMISSION OF Z-AXIS CONNECTOR CO. IS PROHIBITED.	NEXT ASSY USED ON				