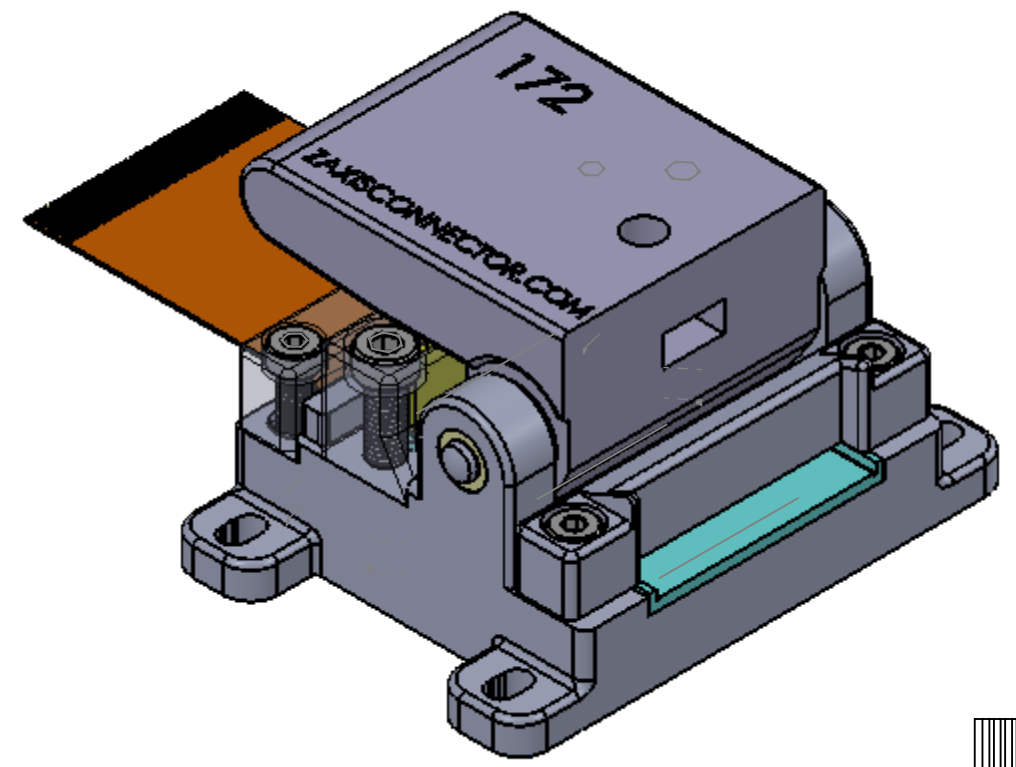
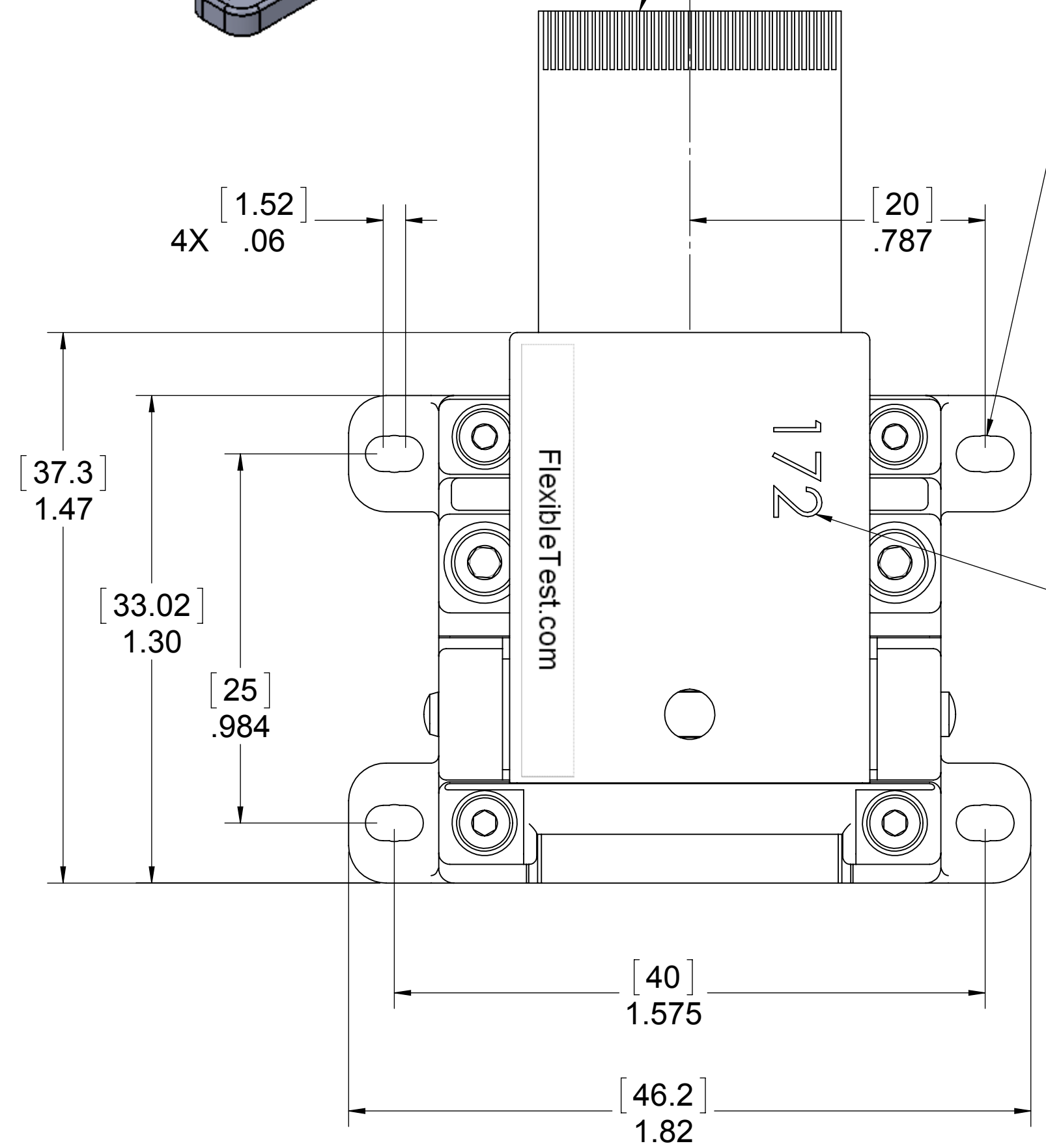


REVISIONS				
ZONE	REV.	DESCRIPTION	DATE	APPROVED

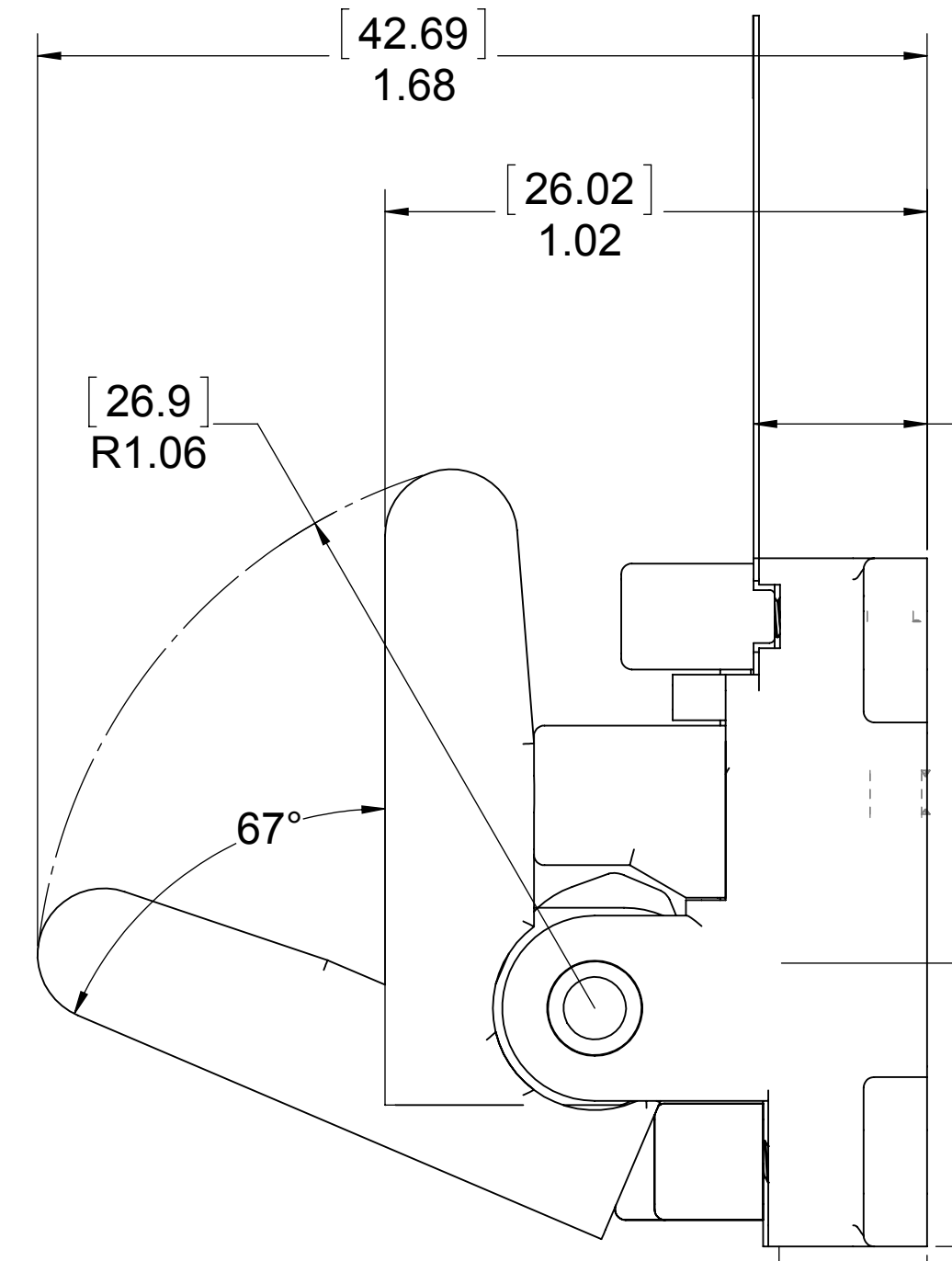


MAXIMUM FLEX WIDTH IS .5mm X 40 TRACES  
TEST EQUIPMENT FLEX LENGTH DEPENDS  
ON AVAILABILITY.

4X CLEARANCE FOR  
M2 OR 2-56 SHCS



UNIT ID  
NUMBER  
TO MATCH  
ID NUMBER  
ON INSERT



[8.33]  
.33 HEIGHT  
OF TEST FLEX  
TO BOTTOM OF  
UNIT

Envelope for

[7.11]  
.28 HEIGHT OF  
DUT (UUT) FLEX  
TO BOTTOM OF  
UNIT

[13.59]  
.535 DISTANCE  
DUT (UUT) FLEX  
ENTERS UNIT FOR  
TESTING

NOTE:  
FOR THIS UNIT, TRACES ON DUT (UUT) FLEX MUST BE FACING UP. TRACES  
ON FLEX GOING TO TEST EQUIPMENT ARE ALSO UP, BUT CAN FACE DOWN  
IF A FLIPOVER FLEX IS USED.

www.flexibletest.com

VIEWS ARE GENERATED BY  
THIRD ANGLE PROJECTION

PROPRIETARY AND CONFIDENTIAL  
THE INFORMATION CONTAINED IN THIS  
DRAWING IS THE SOLE PROPERTY OF  
Z-AXIS CONNECTOR CO. ANY  
REPRODUCTION IN PART OR AS A WHOLE  
WITHOUT THE WRITTEN PERMISSION OF  
Z-AXIS CONNECTOR CO. IS PROHIBITED.

UNLESS OTHERWISE SPECIFIED: DIMENSIONS ARE IN INCHES TOLERANCES: FRACTIONAL ± 1/32 ANGULAR: MACH ± 1/2° BEND ± TWO PLACE DECIMAL ± .010 THREE PLACE DECIMAL ± .005 FOUR PLACE DECIMAL ± .0002	NAME RCK	DATE 3/18/15
INTERPRET GEOMETRIC TOLERANCING PER: MATERIAL	CHECKED	
FINISH	ENG APPR.	
APPLICATION	MFG APPR.	
DO NOT SCALE DRAWING	Q.A.	
	COMMENTS:	

Z-AXIS CONNECTOR CO.		
TITLE: <b>Mini Up Medium FFC</b>		
SIZE <b>C</b>	DWG. NO. <b>MUM-2D-F-A</b>	REV
SCALE: 2:1	WEIGHT:	SHEET 1 OF 1